

# South Park Site Stewards

Winter 2023



## PRESERVING

**62 New Artifacts**  
**14 New Features**

Thanks to Becca, our GIS and tech guru, we are able to upload to our land agencies the data collection, GIS mapping and site condition reports we generate in the field. Digitally capturing photos and data is accurate and necessary for long term historical preservation.



## EDUCATING

Hands on educational events like Archaeological Day can create a spark of wonder and passion in kids and adults. Education is key to enlisting the public to share the responsibility we all have to leave cultural resources in place.



## MONITORING

**28 Site Visits in 2023**  
**a 30% increase**

Site visits with land agency archaeologists set the plan for why a site is important and what to look for.

Stewards monitor sites because they know they can make a difference helping land agencies that need help monitoring their resources.

Monitoring is a great way to become personally involved with the landscape and history of the people that came before us.





Historic sites and buildings attract a lot of visits by the public. Stewards monitor these historical sites for vandalism and changes that pose a threat to the safety of the buildings. Disbursing fire rings discourage repeat fires and camping near historic buildings that are at risk for damage and destruction.



A site stewardship program is only successful because of the dedication and hard work of amazing volunteers. Each of us has unique skills and experiences that we bring to SPSS and the emerging story of humankind. We volunteer to make a difference and monitor sites for human and natural caused changes. Each site visit is an opportunity to be outside, learn something new, and contribute to a shared and interconnected history.

connecting  
with the past

learning and  
sharing

making new  
friends



Lots of rain not only filled the stock tank that has been dry in years past but also caused erosion that covered up some artifacts and exposed others.

## SITE STEWARDSHIP





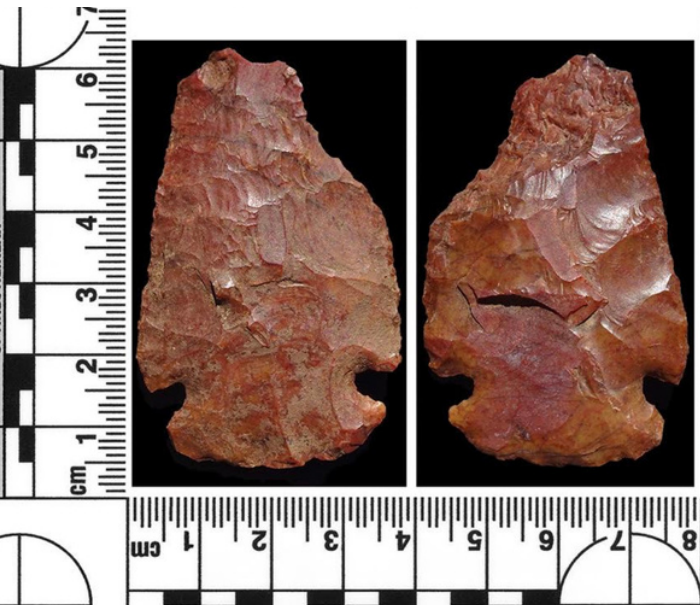
# PRESERVING CULTURAL RESOURCES



*Imagine....*Native Americans working in this very spot 3,000 years ago grinding seeds and nuts while they laughed and talked about their children, the weather, what's for dinner. We were very excited to find several hand stones, then noticed they were next to a bedrock milling stone.



We began exploring Photogrammetry, a process that creates 3D models and virtual reproductions for heritage preservation and education. Artifacts and features that remain in the field can be recorded in close detail and 360 degree rotation. Management is seeking funding to purchase the necessary camera, laptop and software to develop this program.



Large artifact, possibly an early archaic spear point or knife.  
Approximate date, 5,000 - 8,000 years ago.



A new Folsom projectile point base was recorded on a previously recorded BLM Folsom site.  
Approximate date, 12,000 years ago.



## ARCHAEOLOGY DAYS

July 8 - Archaeology Day in South Park on the lawns of the old courthouse in Fairplay.

8 Exhibitors - Over 200 guests

October 21 - International Archaeology Day at Red Rocks in Evergreen.

35 Exhibitors - Over 900 guests

## EDUCATING THROUGH COMMUNITY OUTREACH



Guests at both events were all ages - families, kids, college students, retirees. They asked a lot of questions and were very interested in the exhibits, especially the atlatl. These open, free and fun events are great opportunities to engage and educate the public about preservation and heritage.





## Classroom

After entering the Classroom through the website, Stewards can access

- educational articles and videos
- artifact and feature identification lessons
- the SPSS library list of available hard copy resources



Recording a tipi ring with consulting archaeologist Tom Lincoln



In-field training brings the classroom to life.

On eight site visits we had one of five different archaeologists. Our two steward geologists were also on numerous visits providing valuable lessons in landscape interpretation and lithic and rock feature identification.

# STEWARD TRAINING AND EDUCATION



Season kick off training. Beth conducted training for five new stewards.

Welcome - Craig, Jeanne, Shannon, Sue, Vicky



# 2023 Happenings



Paleobotanical research continues as the team floats another eight bags of soil from a site excavation for analysis.



- 23 Volunteers
- 19 days of field work over two seasons (2021-2022)
- Foot survey of 38.8 acres

A presentation to stakeholders by Tom Lincoln recapping the final report submitted to History Colorado of our two year grant project.

## Colorado Projectile Point Database

SPSS team worked with Coal Creek Research Inc. to scan 88 projectile points stored in the South Park Repository, 49 of which were diagnostic points added to the statewide Colorado Projectile Point Database. Also added to the database were 4 site visit finds.



## COLLABORATIONS

### Site Stewardship Workshop

  
History Colorado



South Park Site Stewards

Presentation in Collaboration with History Colorado Program for Avocational Archaeological Certification and the South Park Site Stewards, Inc.

Speaker - Beth Parisi  
10-28-2023

- Worked with Sarah Allaun, the new assistant state archaeologist at History Colorado, to present the first session of the revived PAAC classes - *Site Stewardship Workshop* conducted by Beth Parisi.
- Colorado College conducted a GIS workshop for site leaders at their college campus lab in Colorado Springs.
- SPSS and Community Connections LLC collaborated on a joint presentation at the SPNHA Conference in Fairplay and CAS annual meeting in Colorado Springs this September.

Community Connections LLC & South Park Site Stewards

Exploring Archaeology and  
History in South Park:  
Educational Courses for Kids

Jessica Ericson, Community Connections LLC  
Jasmine Saxon, MA, RPA, Community Connections LLC  
Barb Saenger, South Park Site Stewards



# 2024 Plans & Projects

## Special Projects

Google Workspace provides a forum for us to create special projects that stewards can research and work on throughout the year. Examples could be

- history projects about previous landowners & ranchers
- shepherders' cairns
- photogrammetry in the field
- Native American history and culture in South Park
- engaging with schools and families about archaeology

## Collaborate Collaborate Collaborate



Working with other archaeological and preservation organizations makes us all better! We interact with people that have similar interests, we learn new things and can have an impact on the long lasting changes that are necessary and possible for heritage preservation.



## Sustainability

We need to create a Strategic Plan and a Document Management Plan for ongoing operations and long range direction and sustainability. We'll be more efficient and productive for our land agencies and community.

## More Training

Thanks for responding to the Steward Survey. You want more training!

We hear you and management will be revamping the training program over the winter.

## More Site Visits

Get Ready!!!





## *Thank You*

*None of this would be possible without the support of SPNHA.*

*Thank you for your time and commitment, for a location for our equipment and materials, and for always being there for us.*

*We appreciate your help and everything you do.*

The mission of SPSS, Inc. is to aid in the conservation, preservation, monitoring, education and research of prehistoric and historical archaeological as well as paleontological resources in the state of Colorado.



**South Park Site Stewards**

<http://southparkstewards.org>