



Newsletter December 2022

Stewardship

Working at high altitudes and sometimes in remote locations, this year SPSS Stewards conducted 23 visits to assigned historic and prehistoric sites in South Park. We monitored and recorded site conditions using GIS equipment and software, and notified landowners of significant problems or situations. The photo at the right below is of a rock ring that someone made at a site with culturally modified trees. Stewards discovered and documented previously unrecorded artifacts and features on nearly all site visits this year. Notable finds can lead to a professional archaeological project, similar to the History Colorado grant work at Buffalo Peaks Ranch.



Community Outreach

SPSS hosted the first *Archaeology Day in South Park* on the lawns of the old courthouse. Ann Cross used a hand held tally clicker and counted more than 330 locals and tourists who stopped by to hear the story of archaeology and stone tools. The exhibits included a tipi with story time for kids, atlatl throwing proving how hard it was for early hunters to get dinner, flint knappers demonstrating how stone tools were made and how sharp they can be, an artifact and stone display, an erupting volcano linked to a lesson on New Mexico obsidian, and an interactive exercise of a site excavation focusing on the importance of context and leaving artifacts in place.



We were able to bring together a community outreach event that engaged the public with interactive exhibits and promoted cultural heritage education as a way of connecting to our past and shared history. As students and adults discover their own cultural heritage, they begin to understand and respect the heritage of others. It was a fun and meaningful day for all of us and plans are already in the works for next year.

Save the Date: Saturday, July 8th – Archaeology Day 2023



“What I really loved about this setup was how everything fit together with the story of archaeology, past peoples, and stone tools. I think we should work to keep the same complimentary format. It was so exciting to see people connect the dots between the booths with the atlatl throwing and flint knapping. I think this experience was very impactful for the guests.”

*Jasmine Saxson,
Community Connections, LLC*

Drone Day



Lori Kennedy's brother, Scott, offered to bring out his drone and spend a day with SPSS filming archaeological features at two sites. Tipi rings that were being mapped for recordation at BPR became more apparent when viewed from above. A different view of the Shepherders' Cairn



demonstrates its precarious placement on a steep slope and potential for collapse by nature or vandalism. Aerial photography gives SPSS another tool to improve the process of monitoring as well as documenting cultural resources for future research and preservation.



Training



Beth Parisi is a PAAC Scholar and conducted an extensive training for eight new stewards at the Fair Barn in September. The training included segments in SPSS Procedures, Site Significance, Preservation Law and Activity Reporting.

Welcome to new stewards: Coleen and Rick Bainbridge, Ann Cross, Lynn Lafleur and Robert Dragonfly, Becca Morse, Linda Rulli, Jan Toyne. We are very excited to have you join us.



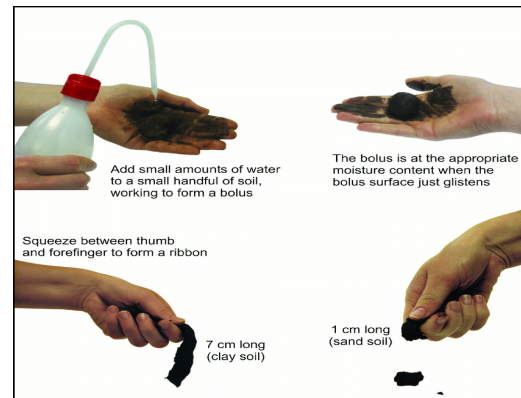
History Colorado Grant Project Buffalo Peaks Ranch

Stewards volunteered for 14 days in June to complete the field work as outlined in the grant scope of work. In addition to mapping 34 stone tipi rings and rock features, stewards conducted 70 soil probes on the ridge. At approximately every 10 meters a 1" diameter probe was inserted as far as possible into the rocky earth. Each core sample was evaluated on-site using the ribboning technique and Munsell color chart to estimate soil type. The overall analysis determined the soil to be mostly clay loam with not much difference in composition across the ridge slope. Susan Bender and Tom Lincoln are preparing the final support documents and assessment report to the State, completing the project by spring 2023. We are hoping to recap the undertaking and its impact in a presentation to stakeholders next summer.



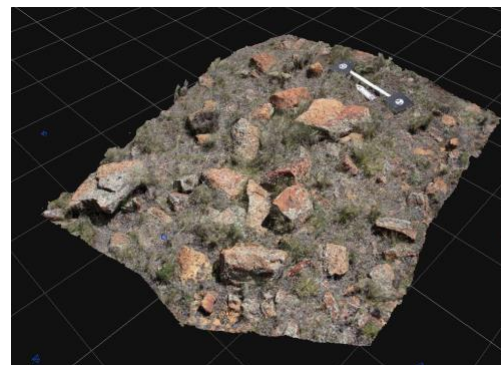
Step Three

- Form a ribbon of soil between your forefinger and thumb
- Ribbon length:
 - < 2.5 cm = loam
 - 2.5 to 5 cm = clay loam
 - > 5 cm = clay
- Longer ribbon = greater clay content



Photogrammetry

SPSS is exploring the science and technology of obtaining precise mathematical measurements and three-dimensional (3D) data from a series of overlapping images. Photogrammetry is another means of providing more detailed and measurable documentation, interpretation and preservation of the cultural resources we monitor.



Special Projects in 2023

Paleobotanical Research



Mitch and Cindy Abeyta head up a team of volunteers to “wash dirt”. Actually they float sediment samples to recover macrofloral remains using a bucket system. Samples are measured and added one liter at a time to a bucket filled with water. After swirling, the floating material is poured through a 150-micron-mesh sieve. This process is repeated with additional water until all floating material is recovered, then dried and submitted for analysis to Paleobotanist, Kathy Puseman.

The samples are from a site believed to represent a base camp that contains a petrified wood heat treatment area and an area of overlapping house floors, post mold, pit features, and pit outlines.

A radiocarbon date for charcoal indicates occupation early in the Late Archaic.

Macrofloral analysis will help determine pit function and to provide information concerning plant resources utilized by the site occupants.

Projectile Point Project

We will be working with Coal Creek Research, Inc. on their Colorado Projectile Point Project, a database of high-resolution scanned images of projectile points from both curated sites and private collections. This project will document and add the projectile points held in the South Park National Heritage Area’s repository to both a State and Federal digital database. This will be a unique opportunity for stewards to participate in a worthwhile project and gain an understanding of the distinctive forms and archaeological period of projectile points.

Rocky Mountain Land Library

We value our partnership with RMLL as they transform the land study center at Buffalo Peaks Ranch connecting people with nature and the land. We joined them this summer for their Colorado and South Park Prehistory talk at the ranch with Tom Lincoln, where visitors gained a new appreciation of 12,000 years of cultural heritage from several archaeological sites in the vicinity of the Ranch. We look forward to continue working with RMLL in the future.



Colorado College

Working with the GIS Technical Department, we are identifying project focused opportunities for both field and lab-based learning and research. A GIS workshop in their lab is scheduled for this spring that will prepare SPSS site leaders for the new field season as well as demonstrate new products and technologies for advanced gps accuracy and recordation. Developing active field research projects are also being explored.

Purchases = Donations

Amazon Smile	Kroger/King Soopers/City Market
<p>AmazonSmile is a simple and automatic way to support SOUTH PARK SITE STEWARDS INC. Every time you shop, at no cost to you, AmazonSmile will donate 0.5% of the price of your eligible purchases to the SOUTH PARK SITE STEWARDS. Signing up is easy!</p> <ol style="list-style-type: none"> 1. Visit smile.amazon.com 2. Sign in with your Amazon.com credentials 3. Choose SOUTH PARK SITE STEWARDS, INC. to receive donations 4. Add a bookmark for smile.amazon.com to make it even easier every time you shop. South Park Site Stewards, Inc. will be automatically designated to receive the donations <p>Start shopping!</p>	<p>City Market/King Soopers/Kroger gives us another way to earn money for SPSS! Most of us already have a loyalty/reward card and now SPSS is registered to earn money based on purchases every time we shop. But each us us have to sign up to link our cards to the program. Here's how.....Click on the appropriate link below..</p> <ul style="list-style-type: none"> • For King Soopers Stores - go to http://www.kingsoopers.com • For City Market Stores - go to http://www.citymarket.com <p>Once you are logged into your King Soopers or City Market account search for South Park Site Stewards, Inc. either by name or our Non-Profit Number - GI031 - and then click Enroll. New users will need to create an account which requires some basic information, a valid email address and a loyalty card.</p> <p>You must swipe your registered King Soopers or City Market loyalty card or use the phone number that is related to your registered King Soopers or City Market loyalty card when shopping for each purchase to count. If you do not have a loyalty card, you can get one at the customer service desk at any King Soopers or City Market.</p>

It was a busy and fun year!
Our heartfelt thanks to each and every one of you for your contributions and friendships.
Best wishes for a happy, healthy, and safe holiday season.