

South Park Site Stewards



PRESERVING

62 New Artifacts
14 New Features

Thanks to Becca, our GIS and tech guru, we are able to upload to our land agencies the data collection, GIS mapping and site condition reports we generate in the field. Digitally capturing photos and data is accurate and necessary for long term historical preservation.



EDUCATING

Hands on educational events like Archaeological Day can create a spark of wonder and passion in kids and adults. Education is key to enlisting the public to share the responsibility we all have to leave cultural resources in place.



MONITORING

28 Site Visits in 2023
a 30% increase

Site visits with land agency archaeologists set the plan for why a site is important and what to look for.

Stewards monitor sites because they know they can make a difference helping land agencies that need help monitoring their resources.

Monitoring is a great way to become personally involved with the landscape and history of the people that came before us.



Historic sites and buildings attract a lot of visits by the public. Stewards monitor these historical sites for vandalism and changes that pose a threat to the safety of the buildings. Disbursing fire rings discourage repeat fires and camping near historic buildings that are at risk for damage and destruction.

A site stewardship program is only successful because of the dedication and hard work of amazing volunteers. Each of us has unique skills and experiences that we bring to SPSS and the emerging story of humankind. We volunteer to make a difference and monitor sites for human and natural caused changes. Each site visit is an opportunity to be outside, learn something new, and contribute to a shared and interconnected history.

connecting
with the past

learning and
sharing

making new
friends



Lots of rain not only filled the stock tank that has been dry in years past but also caused erosion that covered up some artifacts and exposed others.

SITE STEWARDSHIP



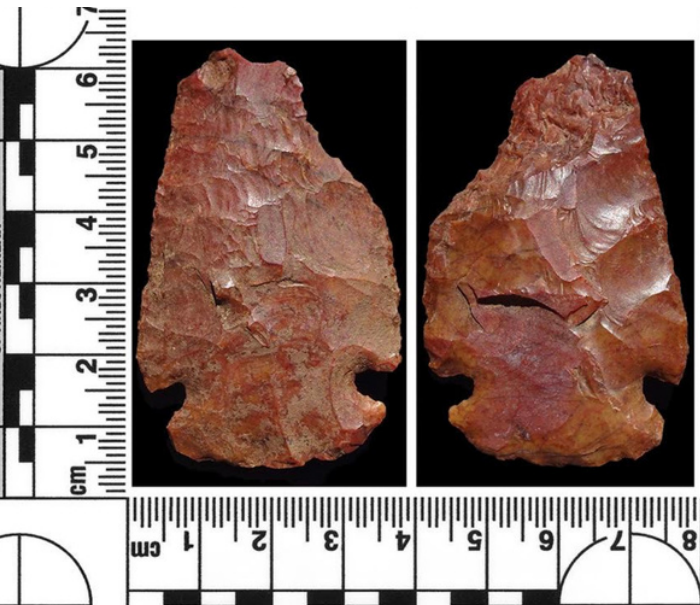
PRESERVING CULTURAL RESOURCES



*Imagine....*Native Americans working in this very spot 3,000 years ago grinding seeds and nuts while they laughed and talked about their children, the weather, what's for dinner. We were very excited to find several hand stones, then noticed they were next to a bedrock milling stone.



We began exploring Photogrammetry, a process that creates 3D models and virtual reproductions for heritage preservation and education. Artifacts and features that remain in the field can be recorded in close detail and 360 degree rotation. Management is seeking funding to purchase the necessary camera, laptop and software to develop this program.



Large artifact, possibly an early archaic spear point or knife.
Approximate date, 5,000 - 8,000 years ago.



A new Folsom projectile point base was recorded on a previously recorded BLM Folsom site.
Approximate date, 12,000 years ago.



ARCHAEOLOGY DAYS

July 8 - Archaeology Day in South Park on the lawns of the old courthouse in Fairplay.

8 Exhibitors - Over 200 guests

October 21 - International Archaeology Day at Red Rocks in Evergreen.

35 Exhibitors - Over 900 guests

EDUCATING THROUGH COMMUNITY OUTREACH



Guests at both events were all ages - families, kids, college students, retirees. They asked a lot of questions and were very interested in the exhibits, especially the atlatl. These open, free and fun events are great opportunities to engage and educate the public about preservation and heritage.



Classroom

After entering the Classroom through the website, Stewards can access

- educational articles and videos
- artifact and feature identification lessons
- the SPSS library list of available hard copy resources



Recording a tipi ring with consulting archaeologist Tom Lincoln



In-field training brings the classroom to life.

On eight site visits we had one of five different archaeologists. Our two steward geologists were also on numerous visits providing valuable lessons in landscape interpretation and lithic and rock feature identification.

STEWARD TRAINING AND EDUCATION



Season kick off training. Beth conducted training for five new stewards.

Welcome - Craig, Jeanne, Shannon, Sue, Vicky

2023 Happenings



Paleobotanical research continues as the team floats another eight bags of soil from a site excavation for analysis.



- 23 Volunteers
- 19 days of field work over two seasons (2021-2022)
- Foot survey of 38.8 acres

A presentation to stakeholders by Tom Lincoln recapping the final report submitted to History Colorado of our two year grant project.

Colorado Projectile Point Database

SPSS team worked with Coal Creek Research Inc. to scan 88 projectile points stored in the South Park Repository, 49 of which were diagnostic points added to the statewide Colorado Projectile Point Database. Also added to the database were 4 site visit finds.

The Numbers

as of 11.28.2023 unaudited

Total Steward Hours: 3,926

Total Miles Driven: 27,017

Total Contribution Value: \$150,855

COLLABORATIONS

Site Stewardship Workshop

 History Colorado



South Park Site Stewards

Presentation in Collaboration with History Colorado Program for Avocational Archaeological Certification and the South Park Site Stewards, Inc.

Speaker - Beth Parisi
10-28-2023

- Worked with Sarah Allaun, the new assistant state archaeologist at History Colorado, to present the first session of the revived PAAC classes - *Site Stewardship Workshop* conducted by Beth Parisi.
- Colorado College conducted a GIS workshop for site leaders at their college campus lab in Colorado Springs.
- SPSS and Community Connections LLC collaborated on a joint presentation at the SPNHA Conference in Fairplay and CAS annual meeting in Colorado Springs this September.

Community Connections LLC & South Park Site Stewards

Exploring Archaeology and History in South Park:
Educational Courses for Kids

Jessica Ericson, Community Connections LLC
Jasmine Saxon, MA, RPA, Community Connections LLC
Barb Saenger, South Park Site Stewards



2024 Plans & Projects

Special Projects

Google Workspace provides a forum for us to create special projects that stewards can research and work on throughout the year. Examples could be

- history projects about previous landowners & ranchers
- shepherders' cairns
- photogrammetry in the field
- Native American history and culture in South Park
- engaging with schools and families about archaeology

Collaborate Collaborate Collaborate



Working with other archaeological and preservation organizations makes us all better! We interact with people that have similar interests, we learn new things and can have an impact on the long lasting changes that are necessary and possible for heritage preservation.



Sustainability

We need to create a Strategic Plan and a Document Management Plan for ongoing operations and long range direction and sustainability. We'll be more efficient and productive for our land agencies and community.

More Training

Thanks for responding to the Steward Survey. You want more training!

We hear you and management will be revamping the training program over the winter.

More Site Visits

Get Ready!!!

FROM THE STEWARD SURVEY

FALL 2023



What did you like about the season?

Meeting new people and learning about how to be a steward.

Site visits, Archaeology Day, opportunity to participate in P3 Project.

Being out in the field, interacting with the other stewards.

New sites and special projects

Visiting sites and learning.

What didn't you like about the season?

I couldn't go to everything.

Very late start to site monitoring. We should start as soon as sites are snow free

Not enough hands on training. Too much emphasis on technology.

Nothing! Oh, the black flies this year.



If you had a magic wand what would you like to change or add to the program?

More involvement with schools.

Expand photogrammetry now that it has a good start.

I would like to get portable audio/video equipment to be able to do oral histories.

More education to help me place artifacts in historical context.



Thank You

Our heartfelt thanks to each and every one of you for your dedication, hard work, contributions and friendship. It has been an amazing year and we could not have done it without you.

Get ready for 2024!!!

Beth & Barb

The mission of SPSS, Inc. is to aid in the conservation, preservation, monitoring, education and research of prehistoric and historical archaeological as well as paleontological resources in the state of Colorado.



South Park Site Stewards

<http://southparkstewards.org>